

– COMSTOCK COMMUNITY CENTER –

Jewels of the Rhine

Switzerland • France • Germany • the Netherlands

LOCAL
PICK UP
INCLUDED

FREE
AIRFARE

CALL FOR DETAILS



Tour Dates: June 4th – 14th, 2025


Mayflower
CRUISES & TOURS
A DIVISION OF THE SCENIC GROUP

Jewels of the Rhine



Lucerne, Switzerland – set amongst a backdrop of the Alps



Strasbourg, France proudly boasts diverse architecture

DAY 1 Depart the USA: Depart the USA on your overnight flight to Zurich, Switzerland.

DAY 2 Zurich to Lucerne, Switzerland: Upon arrival in Zurich, transfer to your hotel in Lucerne to begin your Swiss adventure. Flights should arrive by 3:00pm. The afternoon is at leisure to begin discovering your beautiful new surroundings. This evening, join your Mayflower representative and traveling companions for an included dinner at the hotel. **Meal: D**

DAY 3 Lucerne: After breakfast, an included walking tour highlights the city's landmark, the famous 14th-century Chapel Bridge with its paintings of heroic town events, that crosses the Reuss River. See the 17th-century Renaissance Town Hall and town squares, all set amongst the beautiful backdrop of the Swiss Alps. The remainder of the day is at leisure. **Meal: B**

DAY 4 Lucerne – Basel: Before departing for your ship in Basel, the day is free to enjoy at leisure or join the morning optional excursion to Mt. Pilatus – a mountain overlooking Lucerne that offers a unique alpine experience! This afternoon, travel by motorcoach to Basel, Switzerland for embarkation of your luxurious Emerald Cruises Star-Ship. This evening, join your fellow travelers for dinner onboard. **Meals: B, D**
DiscoverMORE: Mt. Pilatus (additional expense)

DAY 5 Breisach, Germany: As part of the EmeraldPLUS program, visit the city of Freiburg. Considered the 'capital of the Black Forest', Freiburg has lovely sights that will leave you amazed. You also have the opportunity to sample true Black Forest delicacies from the lively market in the city center near the main cathedral. If you're feeling more active, join the guided bike tour in Breisach. Enjoy local entertainment onboard this evening. **Meals: B, L, D**

EmeraldPLUS: Guided tour of Freiburg

EmeraldACTIVE: Bike tour in Breisach

DAY 6 Strasbourg, France: Once docked in Kehl, coaches await to take you across the river to Strasbourg, the capital city of the Alsace Region in France. The guided walking tour takes you along narrow lanes and across footbridges as you discover the Grande Île, the historical city center and UNESCO World Heritage Site. Known for its medieval black and white timber-framed buildings, picturesque le Petite France, old tanning houses, canals and river locks, the city's star attraction is the ornate cathedral, dominating the main square. This afternoon, the city is yours to explore at leisure. **Meals: B, L, D**

DAY 7 Ludwigshafen / Heidelberg, Germany: Relax onboard as the vessel cruises along the Rhine River to Ludwigshafen, docking site for Heidelberg. Travel by coach to Heidelberg, home of the oldest university in Germany. The guided walking tour visits the ruins of Heidelberg Castle, with fantastic views overlooking the Neckar River, and takes you through the cobblestoned-streets of the medieval city below. Alternatively, hike from Mount Königstuhl to Heidelberg. Local entertainment is provided onboard this evening. **Meals: B, L, D**

EmeraldACTIVE: Hike from Mount Königstuhl to Heidelberg

DAY 8 Koblenz: Begin the day sailing through the spectacular UNESCO World Heritage Rhine Gorge. Pass countless medieval castles and vineyards lining the shores of this section of the river, with photo opportunities around every bend. See the infamous Lorelei statue and Pfalzgrafenstein Castle, built on an island in the middle of the river as a medieval toll station. Continue cruising to the 2000-year-old town of Koblenz, situated at the confluence of the Rhine and Moselle Rivers. Enjoy a walking tour through the streets of the city as your guide points out historic monuments and buildings. See the 'German Corner' monument marking the confluence of the Rhine and Moselle Rivers. Panoramic views await from the visit to Ehrenbreitstein Fortress, reached by cable car, crossing the river!



Relax during a glass-top canal cruise through Amsterdam

This evening, attend a private concert as part of the EmeraldPLUS program. **Meals: B, L, D**

DiscoverMORE: Moselle & Cochem (Reichsburg) Castle Visit (additional expense)

EmeraldPLUS: Private Evening Concert

DAY 9 Cologne: Continue cruising along the Rhine River to Cologne. Founded by the Romans, the city is one of Germany's oldest and is famous for its magnificent UNESCO World Heritage gothic cathedral. Join your local guide for an included walking tour of the city, touching on the historical charm of the Old Town and its Roman history. Traverse the quaint alleyways and see historic monuments alongside modern architecture. The remainder of the day is at leisure. This evening, back onboard, join your Captain for a farewell reception and dinner. **Meals: B, L, D**

DAY 10 Amsterdam, the Netherlands: Welcome to Amsterdam, the final port of call. Experience the city on a cruise aboard a glass-top boat. Traverse the UNESCO World Heritage network of canals, passing Roman patrician and ornate merchant houses from the Dutch Golden Age. Alternatively, join a guided bike tour to Waterland, passing through quintessential Dutch landscapes of quaint villages and windmills. **Meals: B, L, D**
EmeraldACTIVE: Guided bike tour to Waterland (instead of canal cruise)

DAY 11 Amsterdam / USA: Bid 'auf wiedersehen' to Europe and return home with memories of life-enriching experiences from your European adventure and cruise along the Rhine River. **Meal: B**
 Itinerary is subject to change.

CRUISE AND HOTEL ACCOMMODATIONS

Days 2 and 3 – Hotel Europe or similar, Lucerne, Switzerland

Days 4 through 10 – Aboard an Emerald Cruises Star-Ship
 Post-cruise hotel stays available in Amsterdam. Call for details.



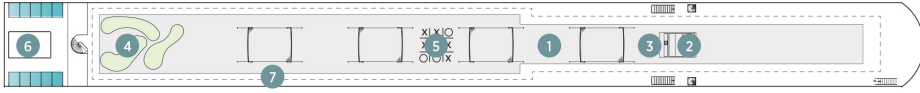
Exceptional Inclusions

- **23 Meals:** 9 breakfasts, 6 lunches and 8 dinners
- **Airport transfers** on tour dates when air is provided by Mayflower Cruises & Tours
- Visit **four countries**
- Two-night **hotel stay and touring in Lucerne**
- **Seven-nights in a suite or stateroom** of your choice onboard the vessel
- **First-class service** by an English-speaking crew
- **Onboard Activity Manager** will support all EmeraldACTIVE excursions and host daily onboard wellness activities, games, classes and evening entertainment
- **All gratuities included**
- **Shore excursions** with English-speaking local guides
- Personal **listening device** for shore excursions
- Visit **UNESCO World Heritage Sites**
- **All meals included** onboard with a variety of **international cuisine**
- Complimentary **regional wines, beer and soft drinks** with onboard lunches and dinners
- Complimentary **bottled water** in your stateroom
- Complimentary **WiFi onboard**
- Complimentary **bicycles onboard** for use ashore
- **All port charges included**

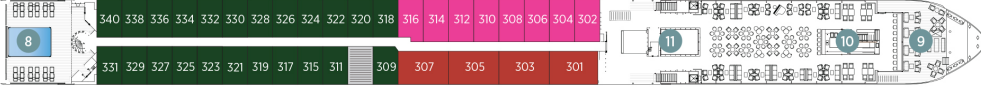
Emerald Cruises Star-Ships

Built: 2014-20 **Speed:** 15.5 mph **Staterooms:** 19 **Suites:** 72 **Length:** 443 ft. **Crew:** 47

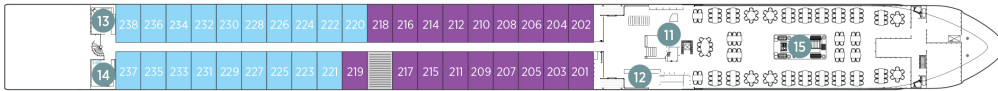
SUN DECK



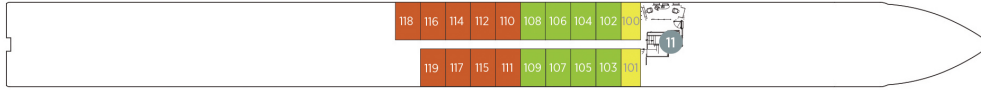
HORIZON DECK



VISTA DECK

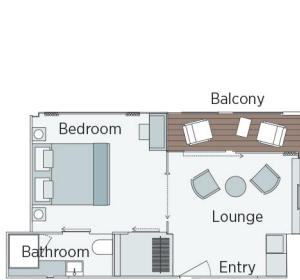


RIVIERA DECK



Public Areas and Ship Amenities

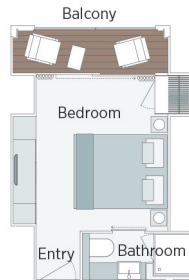
- 1 Sun Deck with Deck Chairs
- 2 Navigation Bridge
- 3 Sky Barbeque
- 4 Golf Putting Green
- 5 Games Area
- 6 Retractable Glass Roof
- 7 Walking Track
- 8 Daytime Pool / Evening Cinema
- 9 The Terrace
- 10 Horizon Bar and Lounge
- 11 Elevator
- 12 Reception
- 13 Wellness Area
- 14 Fitness Area
- 15 Reflections Restaurant



Owner's One-Bedroom Suite

315ft²

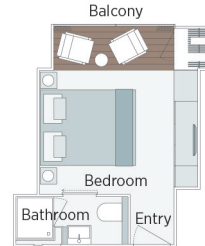
CAT SA



Grand Balcony Suite

210ft²

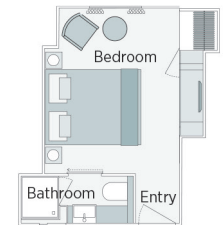
CAT S



Panorama Balcony Suite

180ft²

CAT A CAT B CAT C



Emerald Stateroom

162ft²

CAT D CAT E

Jewels of the Rhine River Cruise

		JUNE 4, 2025	
CAT	STATEROOM / SUITE	DECK	
E	Emerald Stateroom	Riviera	\$5,175
D	Emerald Stateroom	Riviera	\$5,285
C	Panorama Balcony Suite	Vista	\$5,909
B	Panorama Balcony Suite	Vista	\$6,189
A	Panorama Balcony Suite	Horizon	\$6,479
S	Grand Balcony Suite	Horizon	\$6,929
SA	Owner's One-Bedroom Suite	Horizon	\$7,839

Non-members add 10%
Membership only \$35 per year.

Pricing includes land tour and FREE AIRFARE from Kalamazoo, when deposited within promotion window.

Call for details.



Travelers Protection Plan (TPP) for River Cruises - \$399 per person

This nonrefundable fee will provide a refund to you during the instance that you have to cancel your trip. The cancellation has to be for a covered reason (see Plan for details on coverage) and we have to be notified at least one day prior to departure. If you must leave the tour early due to personal illness or the illness or death of an immediate family member, TPP will provide a refund for any unused services after the departure of the tour. Other benefits include medical expenses for illness and injury, emergency transportation, 24 hour hot line and lost or stolen baggage assistance. Return air transportation is included ONLY if your air tickets are purchased through Mayflower Cruises & Tours. Please review the Plan for details on coverage. Should you choose not to purchase our TPP, the following per person cancellation charges will be assessed for all tours and optional excursion costs:

- 91 days or more prior to departure: Deposit Amount
- 90 days to day of departure: 100% of total tour
- No refund on unused portions of the tour

Exclusions: Mayflower Cruises & Tours reserves the right to alter its Refund and Cancellation Policy when a substantial amount of cancellation or postponement of travel is attributable to: conditions resulting from an act of God, natural or man-made disaster, fire, government action, civil disorder, war, hostilities between nations, or unavailability of transportation through no fault of Mayflower Cruises & Tours. *Plan and benefits offered and administered by Trip Mate, Inc.*



FOR RESERVATIONS OR INFORMATION CONTACT:

Anne Howard
269-345-8556
travel@comstockcc.com